

Area Valve Service Unit (AVSU) Installation Instructions.

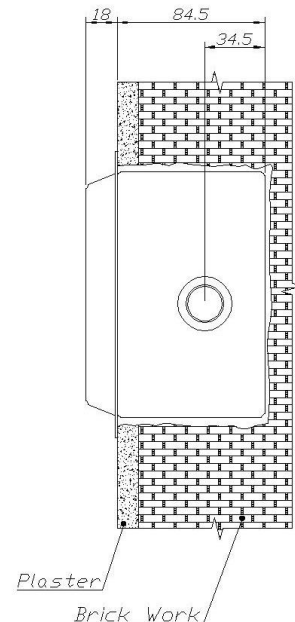
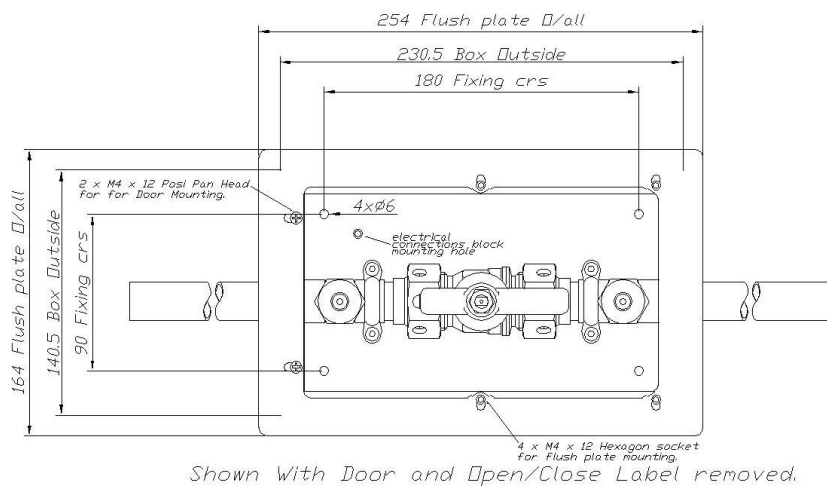
The AVSU may be installed in horizontal or vertical positions. Either way it is advisable to maintain the following sequence from left to right or top to bottom.

02, N2O, 50% O2/50% N2O, Med AIR 4, Surgical AIR, Vacuum

The AVSU should be installed at a height that is easily accessible, HTM02-01 states a mounting range of between 800mm – 1800mm from finished floor level. Consideration must be given to furniture or crash rails that may be installed at a later stage of the construction.

Assembly – AVSU singular units

- Open the door, remove valve handle and valve cover plate from the AVSU assembly and store in a safe place.
- Ensure that a cable entry hole is drilled in the box if a pressure sensor is fitted within the box.*Ensure the pressure sensors are on the downstream of the unit.
- Determine the position of the AVSU and secure to the wall utilising the mounting holes on the rear of the box.
- Braze the copper stub to the fixed pipeline system; take care not to burn the enclosure by taking appropriate means.
- Pressure test as per the contract conditions eg.HTM2022 guidelines.
- Install the cover plate and valve handle.



Revision 1

www.precisionuk.co.uk



Company Registered Office: Crown House, Stockport, Cheshire, SK1 3RB
Registered in England and Wales No. 05058855
VAT No. 850 0700 67

CPX Technology Building, Pepper Road, Hazel Grove,
Stockport, Cheshire, SK7 5BW, UK
Tel: +44 (0) 161 487 2822
Fax: +44 (0) 161 487 2816
Email: info@precisionuk.co.uk